

THE C A N A D I A N ARCHITECT

A SOUTHAM BUSINESS PUBLICATION

FEBRUARY 1992 • \$ 4



BROSSARD RESIDENCE

1220 SHAW STREET, TORONTO

Oleson Worland Architects

Extensive additions were made to this 1880s frame home without overwhelming its proportions.

The project involved substantial additions to a cottage in a mixed residential/industrial area in Toronto's west end. The owners are a working couple with two children who, besides a three-bedroomed home, wanted a separate nanny flat and recording studio.

Land which probably originally belonged to the house has been built on, leaving only ten feet of frontage on Shaw Street to the east. However, the lot opens up off a laneway along the north and the architects used this area to articulate the different elements of the program into distinct volumes. The original house contains the more public living spaces in a foursquare plan, and behind, ranged along a cross axis and parallel to the laneway have been placed the new volumes containing the bedrooms and nanny flat above, and a separate acoustically-protected recording studio off to the east.

In this way the new additions do not overwhelm the proportions of the original house, even though they are much larger (270 m² added to the 70-m² original house). Similarly, its articulation reduces its scale and helps it blend into the neighbourhood, the additions resembling in mass various garages along the laneway. The separation into volumes also allows for privacy, separate entrances and individual outdoor spaces for the various components, including a garden for the house, a deck for the flat and a patio for the studio. The project was completed in May 1991. ♦

Client:

René and Gabriel Brossard

Architect team:

Wilfrid Worland, David Oleson, Mark Michasiw, Heather Taylor, Rick Andrighetti, Marko Lavrisa

Structural:

Teet Toome

Mechanical:

Keen Engineering

Acoustic:

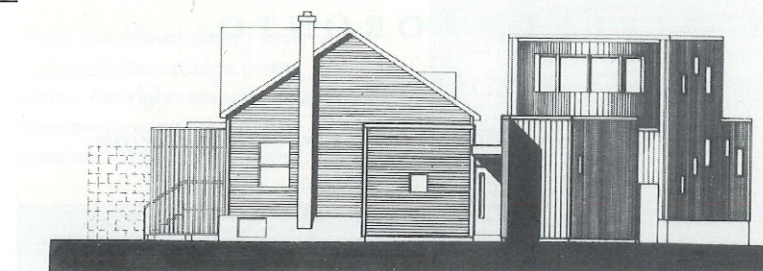
René Brossard

Contractor:

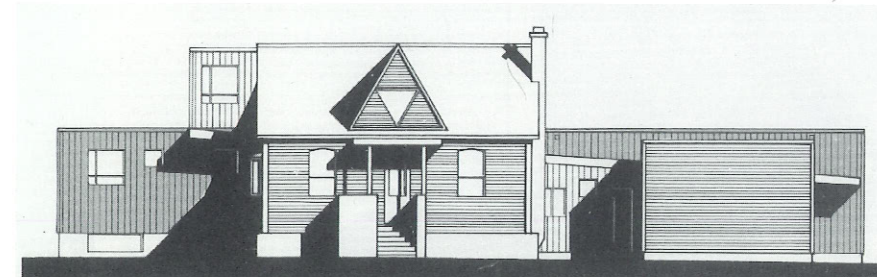
Jocas Construction

Photos:

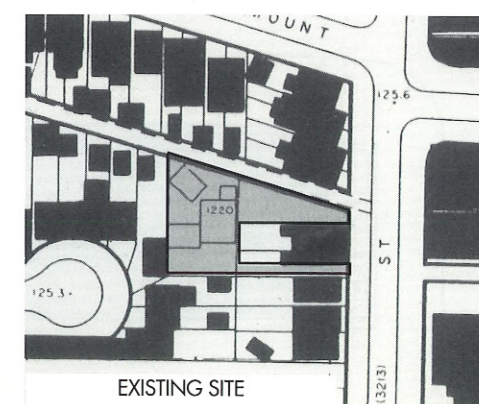
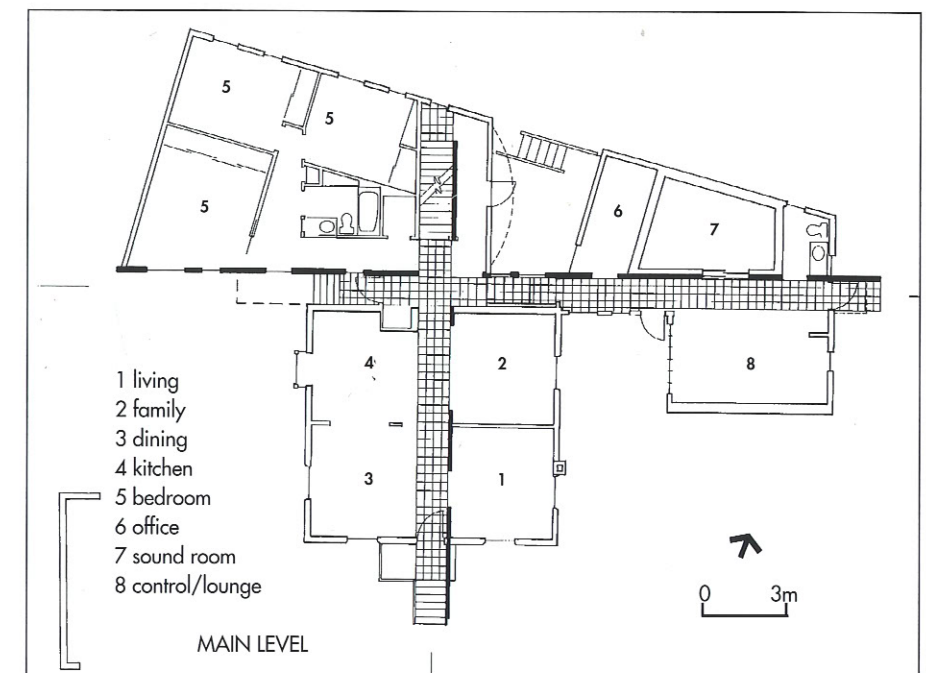
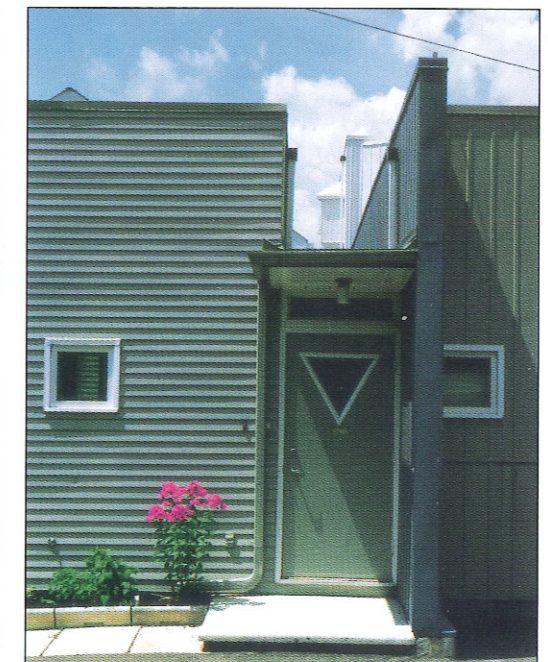
André Beneteau, Acme Photographic



EAST ELEVATION



SOUTH ELEVATION



EXISTING SITE

Facing page top: view from southwest. Below: from southeast, with recording studio in foreground, bay windowed upper nanny flat behind. Old and new elements are distinguished by cladding treatments, with the blue-clad cross-axis wall unifying the whole. Top right: studio entrance.